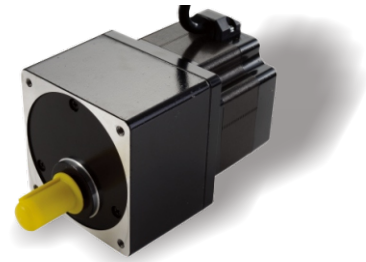


Specifications

| | |
|--------------------------|-------------------------------------|
| Step Angle | 1.8° |
| Step Angle Accuracy | ±0.09° (full step, no load) |
| Backlash | 0.5° to 1° |
| Storage Humidity | 20% to 90% |
| Max. Surface Temperature | 100 °C Max.(max. allowed temp.) |
| Ambient Temperature | -20 °C to +50 °C |
| Insulation Resistance | 500VDC, 100 MΩ Min. |
| Dielectric Strength | 500 VAC, 1min, Class B |
| Max. Radial Load | 60N |
| Max. Axial Load | 320N (20mm from installation point) |

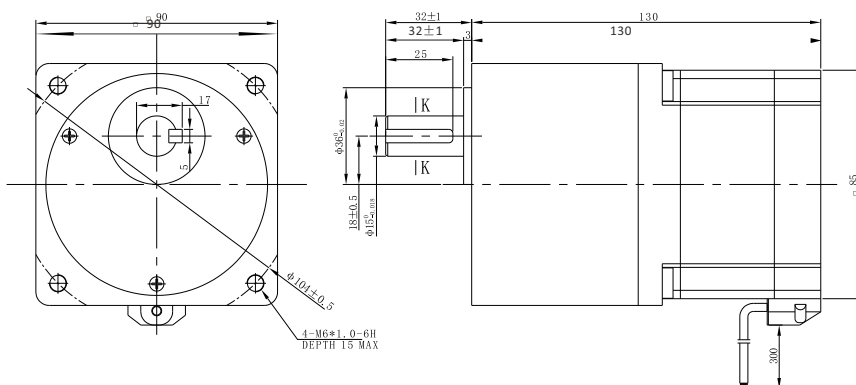


Highlights:

- Japanese Top Manufacturer;
- Low Noise, Low Vibration, High Smoothness;
- Compact design, same size for 1:3.6 to 1:100;
- High Efficiency, Long lifetime ;
- Flexible in **Customization**:
Shaft Type(diameters, dual shaft, hollow shaft, flat, key),
Torque Values, Lead Type etc.

| Model | Gear Output Torque N.m | Reduction Ratio | Step Degree Gear Side | Current A/Ø | Resistance Ω/Ø | Inductance mH/Ø | Rotor Inertia g.cm ² | Bi/Unipolar # of Leads | Weight Kg | Length Includ. Gear mm |
|------------------------|------------------------|-----------------|-----------------------|-------------|----------------|-----------------|---------------------------------|------------------------|-----------|------------------------|
| 90AHS250-3006GR3.6-130 | 2.5 | 1:3.6 | 0.5 | 3.0 Half | 0.49 | 1.5 | 1400 | Bi(6) | 3.0 | 130 |
| 90AHS500-3006GR7.2-130 | 5.0 | 1:7.2 | 0.25 | 3.0 Half | 0.49 | 1.5 | 1400 | Bi(6) | 3.0 | 130 |
| 90AHS630-3006GR9-130 | 6.3 | 1:9 | 0.2 | 3.0 Half | 0.49 | 1.5 | 1400 | Bi(6) | 3.0 | 130 |
| 90AHS700-2106GR10-130 | 7.0 | 1:10 | 0.18 | 3.0 Half | 0.49 | 1.5 | 1400 | Bi(6) | 3.0 | 130 |
| 90AHS900-2106GR18-130 | 9.0 | 1:18 | 0.1 | 2.1 Full | 0.98 | 6.0 | 1400 | Bi(6) | 3.0 | 130 |
| 90AHS1200-2106GR36-130 | 12.0 | 1:36 | 0.05 | 2.1 Full | 0.98 | 6.0 | 1400 | Bi(6) | 3.0 | 130 |

Mechanical Dimensions in mm



Wiring Diagrams

