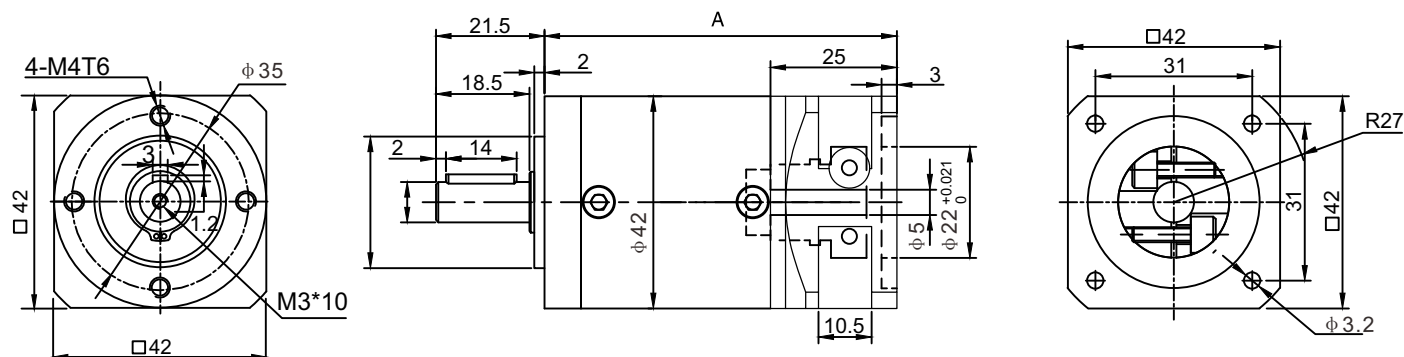


# DLEP42 Series Planetary Gear Reducer

High Precision for Stepper Motors

## ■ Mechanical Dimensions in mm



Note: Customizable to match with all motors.

## ■ Specifications

Stage	1-Stage				2-Stage					3-Stage					
Length of A (mm)	58				70					82					
Reduction Ratio	4	5	8	10	16	20	25	40	50	64	80	100	125	160	200
Rated Output Torque (N.m)	8	7	4	4	12	12	10.5	10.5	10.5	15.5	15.5	15.5	13.5	15.5	13.5
Max. Output Torque (N.m)	16	14	8	8	24	24	21	21	21	31	31	31	27	31	27
Fullload Efficiency (%)	96%				94%					90%					
Backlash	<15arcmin				<20arcmin					<30arcmin					
Weight (kg)	0.23				0.34					0.5					
Average Lifetime (H)	> 20000														
Lubrication	Long Term Effective Grease														
Rotation Direction	Input Output Same Direction														
Working Temperature	-10 <sup>0</sup> ~+80 <sup>0</sup>														
Installation	Any														