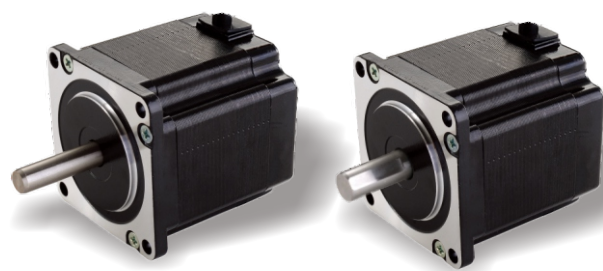


57AHS100/140-55 Series

Nema 23, 2 Phase Standard Hybrid Stepper Motors

Specifications

Step Angle	1.8° (2 Phase)
Step Angle Accuracy	0.09°
Shaft Type	Single, Dia. 6.35 & 8mm (Customizable)
Max. Temperature Rise	Less than 80 °C (Rated Current)
Max. Surface Temperatures	Max Allowed 100°C
Ambient Temperature	-20 °C ~ +50 °C
Insulation Grade	100 MΩ Min. , Class B
Dielectric Strengt	500 VAC for 1 Minute
Max. Axial Load	15N
Max. Radial Load	90N (15mm from mounting Surface)
Certificates	Rohs, CE, CCC (As per Customer Need)

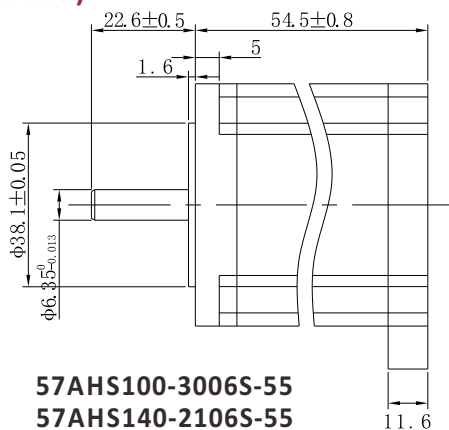
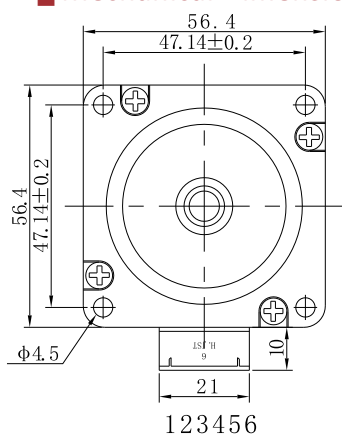


Highlights:

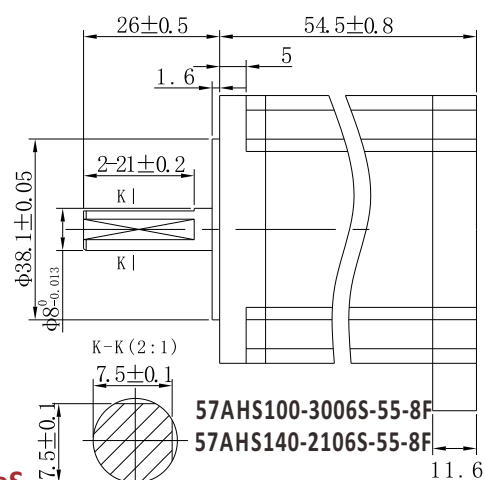
- By Japanese Top Manufacturer;
- High Speed, High Smoothness;
- High Efficiency, Long lifetime ;
- Flexible in **Customization**:
Shaft Type(diameters, dual shaft, hollow shaft, flat, key)),
Torque Values, Lead Type etc.

Model	Current A/Ø	Resistance Ω/Ø	Inductance mH/Ø	Holding Torque N.m	Rotor Inertia g.cm ²	Lead # of Leads	Weight kg	Length mm	Matching Drive
57AHS100-3006S-55	3.0 Half	0.8	1.3	1.0	245	6	0.71	54.5	Y2SD2
57AHS140-2106S-55	2.1 Full	1.6	5.2	1.4	245	6	0.71	54.5	Y2SD2
57AHS100-3006S-55-8F	3.0 Half	0.8	1.3	1.0	245	6	0.71	54.5	Y2SD2
57AHS140-2106S-55-8F	2.1 Full	1.6	5.2	1.4	245	6	0.71	54.5	Y2SD2

Mechanical Dimensions (in mm)



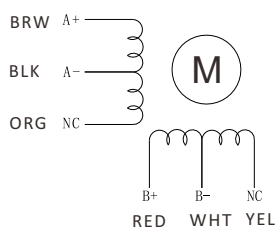
57AHS100-3006S-55
57AHS140-2106S-55



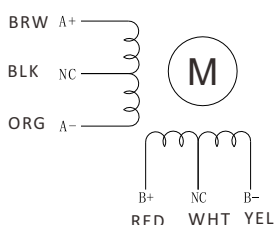
57AHS100-3006S-55-8F
57AHS140-2106S-55-8F

Wiring Diagram

57AHS100-3006S-55



57AHS140-2106S-55



Torque Speed Curves

