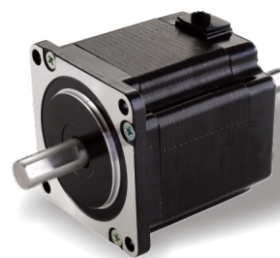


57AHS140-55 Dual Shaft

Nema 23, 2 Phase Standard Hybrid Stepper Motors

Specifications

Step Angle	1.8° (2 Phase)
Step Angle Accuracy	0.09°
Shaft Type	Single, Dia. 6.35mm (Customizable)
Max. Temperature Rise	Less than 80 °C (Rated Current)
Max. Surface Temperatures	Max Allowed 100°C
Ambient Temperature	-20 °C ~ +50 °C
Insulation Grade	100 MΩ Min. , Class B
Dielectric Strengt	500 VAC for 1 Minute
Max. Axial Load	15N
Max. Radial Load	90N (15mm from mounting Surface)
Certificates	Rohs, CE, CCC (As per Customer Need)

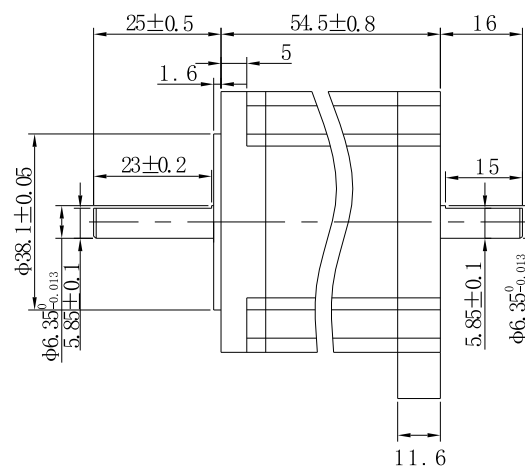
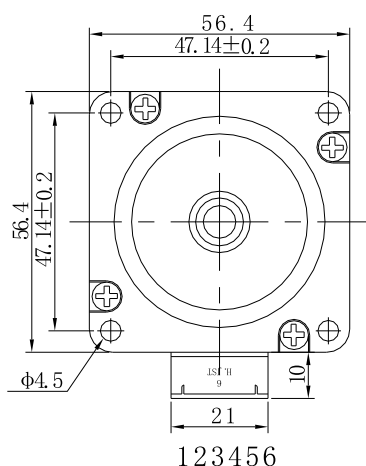


Highlights:

- By Japanese Top Manufacturer;
- High Speed, High Smoothness;
- High Efficiency, Long lifetime ;
- Flexible in **Customization**:
Shaft Type(diameters, dual shaft, hollow shaft, flat, key),
Torque Values, Lead Type etc.

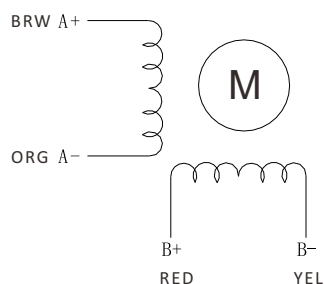
Model	Current A/Ø	Resistance Ω/Ø	Inductance mH/Ø	Holding Torque N.m	Rotor Inertia g.cm ²	Lead # of Leads	Weight kg	Length mm	Matching Drive
57AHS140-4204D-78-6.35F	4.2	0.4	1.3	1.4	245	4	0.71	54.5	Y2SD2

Mechanical Dimensions (in mm)



Note: Wiring cables length 300mm.

Wiring Diagram



Torque Speed Curves

