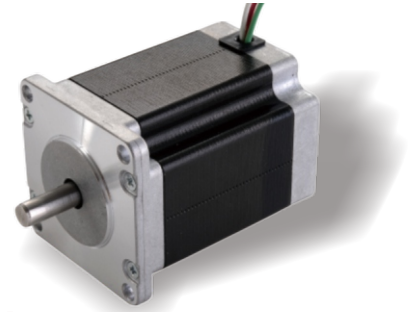


86AHS850 Series

Nema 34, 2 Phase Standard Hybrid Stepper Motors

Specifications

Step Angle	1.8° (2 Phase)
Step Angle Accuracy	0.09°
Shaft Type	Single, Dia. 14mm (Customizable)
Max. Temperature Rise	Less than 80 °C (Rated Current)
Max. Surface Temperatures	Max Allowed 100°C
Ambient Temperature	-20 °C ~ +50 °C
Insulation Grade	100 MΩ Min. , Class B
Dielectric Strength	1500 VAC for 1 Minute
Max. Axial Load	60N
Max. Radial Load	320N (20mm from mounting Surface)
Certificates	Rohs, CE, CCC (As per Customer Need)

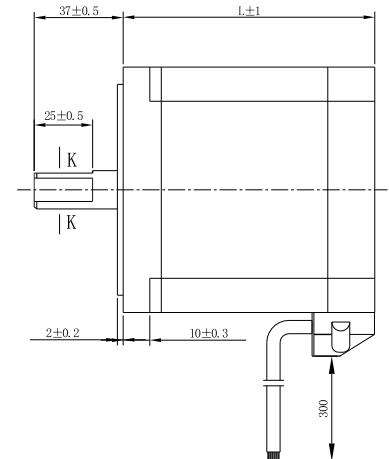
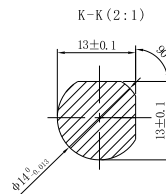
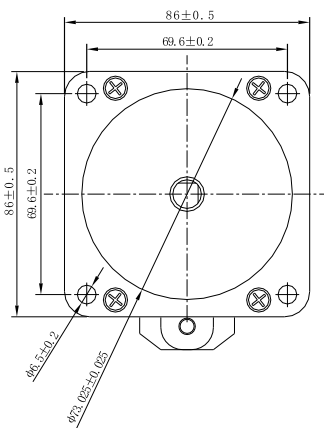


Highlights:

- By Japanese Top Manufacturer;
- High Speed, High Smoothness;
- High Efficiency, Long lifetime ;
- Flexible in **Customization**:
Shaft Type(diameters, dual shaft, hollow shaft, flat, key),
Torque Values, Lead Type etc.

Model	Current A/Ø	Resistance Ω/Ø	Inductance mH/Ø	Holding Torque N.m	Rotor Inertia g.cm ²	Lead # of Leads	Weight kg	Length mm	Matching Drive
86AHS850-3608S-126-14F	3.6 Parallel	1.05	11	8.5	2750	8	3.8	125.5	Y2SA2
86AHS850-1808S-126-14F	1.8 Serial	4.2	44	8.5	2750	8	3.8	125.5	Y2SA2

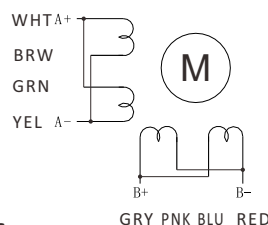
Mechanical Dimensions (in mm)



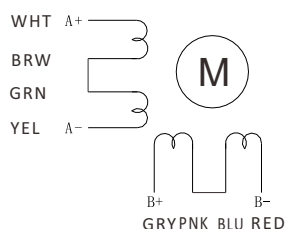
Note: Two models only different of wirings.

Wiring Diagram

86AHS850-3608S-126



86AHS850-1808S-126



Torque Speed Curves

