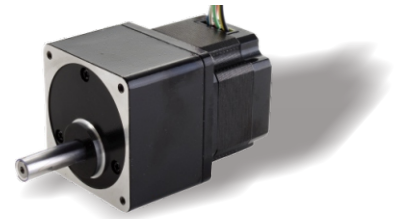


Specifications

Step Angle	1.8°
Step Angle Accuracy	±0.09° (full step, no load)
Backlash	0.5° to 1°
Storage Humidity	20% to 90%
Max. Surface Temperature	100 °C Max.(max. allowed temp.)
Ambient Temperature	-20 °C ~ +50 °C
Insulation Resistance	500VDC, 100 MΩ Min.
Dielectric Strength	500 VAC, 1min, Class B
Max. Radial Load	15N
Max. Axial Load	60N (15mm from installation point)

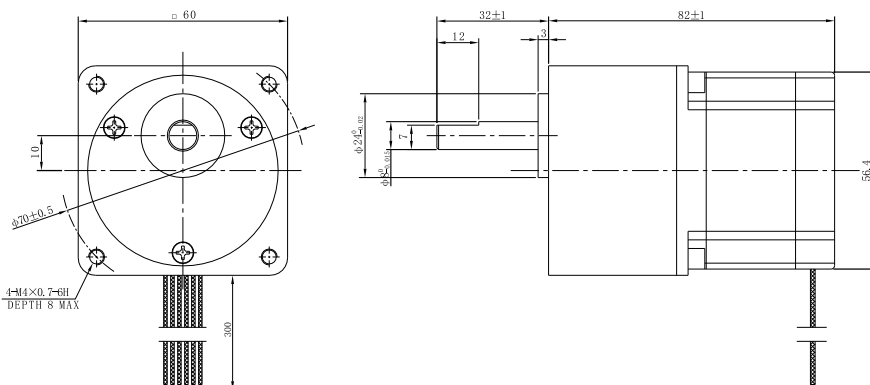


Highlights:

- Japanese Top Manufacturer;
- Low Noise, Low Vibration, High Smoothness;
- Compact design, same size for 1:3.6 to 1:100;
- High Efficiency, Long lifetime ;
- Flexible in **Customization**:
Shaft Type(diameters, dual shaft, hollow shaft, flat, key),
Torque Values, Lead Type etc.

Model	Gear Output Torque N.m	Reduction Ratio	Step Degree Gear Side	Current A/Ø	Resistance Ω/Ø	Inductance mH/Ø	Rotor Inertia g.cm ²	Bi/Unipolar # of Leads	Weight Kg	Length Includ. Gear mm
60AHS100-2006GR3.6-82	1.0	1:3.6	0.5	2.0 Half	1.1	1.1	135	Bi(6)	0.8	82
60AHS200-2006GR7.2-82	2.0	1:7.2	0.25	2.0 Half	1.1	1.1	135	Bi(6)	0.8	82
60AHS250-2006GR9-82	2.5	1:9	0.2	2.0 Half	1.1	1.1	135	Bi(6)	0.8	82
60AHS270-2006GR10-85	2.7	1:10	0.18	2.0 Half	1.1	1.1	135	Bi(6)	0.8	82
60AHS300-1406GR18-82	3.0	1:18	0.1	1.4 Full	2.2	4.4	135	Bi(6)	0.8	82
60AHS400-1406GR36-82	4.0	1:36	0.05	1.4 Full	2.2	4.4	135	Bi(6)	0.8	82
60AHS400-1406GR50-82	4.0	1:5	0.036	1.4 Full	2.2	4.4	135	Bi(6)	0.8	82
60AHS400-1406GR100-82	4.08	1:100	0.018	1.4 Full	2.2	4.4	135	Bi(6)	0.8	82

Mechanical Dimensions in mm



Wiring Diagrams

