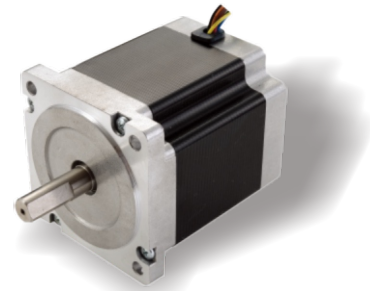


# 86AHS630-12.7F Series

Nema 34, 2 Phase Standard Hybrid Stepper Motors

## Specifications

Step Angle	1.8° (2 Phase)
Step Angle Accuracy	0.09°
Shaft Type	Single, Dia.12.7mm (Customizable)
Max. Temperature Rise	Less than 80 °C (Rated Current)
Max. Surface Temperatures	Max Allowed 100 °C
Ambient Temperature	-20 °C ~ +50 °C
Insulation Grade	100 MΩ Min. , Class B
Dielectric Strengt	1500 VAC for 1 Minute
Max. Axial Load	60N
Max. Radial Load	320N (20mm from mounting Surface)
Certificates	Rohs, CE, CCC (As per Customer Need)

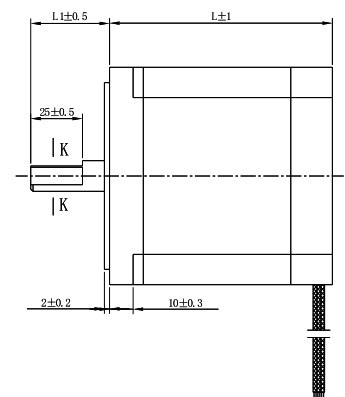
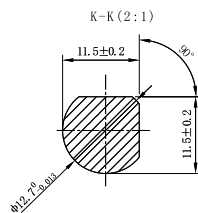
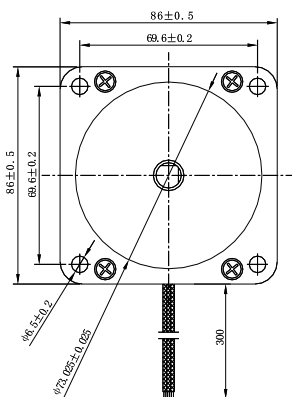


## Highlights:

- By Japanese Top Manufacturer;
- High Speed, High Smoothness;
- High Efficiency, Long lifetime ;
- Flexible in **Customization**:  
Shaft Type(diameters, dual shaft, hollow shaft, flat, key),  
Torque Values, Lead Type etc.

Model	Current A/Ø	Resistance Ω/Ø	Inductance mH/Ø	Holding Torque N.m	Rotor Inertia g.cm <sup>2</sup>	Lead # of Leads	Weight kg	Length mm	Matching Drive
86AHS630-6408S-96-12.7F	6.4 Parallel	0.33	2.7	6.3	1850	8	2.7	96	Y2SD3
86AHS630-3208S-96-12.7F	3.2 Serial	1.32	10.8	6.3	1850	8	2.7	96	Y2SD2

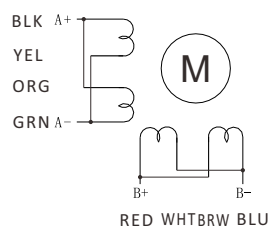
## Mechanical Dimensions (in mm)



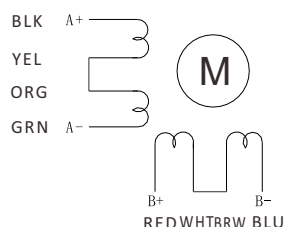
Note: Two models only different of wirings.

## Wiring Diagram

### 86AHS630-6408S-96



### 86AHS630-3208S-96



## Torque Speed Curves

