

# GDK Series CNC Centre Milling and Engraving Constant Torque Electric Spindles

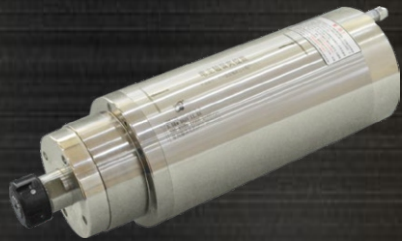
## Product Overview

Wide Range of Torque, from 0.16 to 11 N.m

Wide Coverage of Applications

High Speed Improve Processing Quality

Low Temperature Rise and Long Lifetime  
For Applications needs Fixed Torque, such Grinding, Polishing etc.  
CE Certificate



Constant Torque



Water Cooling



Selft Cooling



Grease Lubrication

## Specifications

Models	Motor							Dimensions(mm)					Joint of Nose	Lub.	Cool	Bearings Type	Weight
	Speed (r/min)	Power KW	Torque Nm	Voltage V	Current A	Frequency Hz	P	L	L1	L2	ØD	ØD1					
GDK58-24Z/0.4	24000	0.4	0.16	110	2.4	400	2	213	13.5	15.5	58	53.5	ER11-Ø3.175-Ø7.0	Grease	Self	1X7002C P4 1X7000C P4	3
GDK58-24Z/0.8	24000	0.8	0.32	220	3.0	400	2	219	13.5	15.5	58	53.5	ER11-Ø3.175-Ø7.0	Grease	Water	2X7002C P4 1X7000C P4	3
GDK80-24Z/1.5	24000	1.5	0.60	220 380	5.6 3.0	400	2	258	21	15	80	72	ER16-Ø3.175-Ø10	Grease	Water	2X7004C P4 2X7001C P4	6
GDK80-24Z/2.2	24000	2.2	0.80	220 380	7.6 4.4	400	2	284	26	15	80	78	ER20-Ø3.175-Ø13	Grease	Water	2X7005C P4 2X7002C P4	8
GDK85-24Z/2.2D	24000	2.2	0.88	220 380	7.6 5.5	400	2	284	27	15	85	69	ER20-Ø3.175-Ø13	Grease	Water	2X7005C P4 2X7003C P4	9
GDK85-24Z/2.2-BJ	24000	2.2	0.88	220 380	7.6 5.5	400	2	314	27	16	85	68.5	ER20-Ø3.175-Ø13	Grease	Water	2X7005C P4 2X7002C P4	10
GDK100-24Z/3.2	24000	3.2	1.27	220 380	11.0 6.4	400	2	295	27.5	30.5	100	78	ER20-Ø3.175-Ø13	Grease	Water	2X7005C P4 2X7003C P4	9
GDK105-21Z/3.5	21000	3.5	1.59	220 380	12.1 7.0	350	2	312	25	57	105	80	ER20-Ø3.175-Ø13	Grease	Water	2X7006C P4 2X7004C P4	12
GDK110-24Z/4.0	24000	4.0	1.59	220 380	14.0 8.0	400	2	344	29	55	110	80	ER20-Ø3.175-Ø13	Grease	Water	2X7006C P4 2X7004C P4	13
GDK110-18Z/4.0	18000	4.0	2.12	220 380	14.0 8.0	300	2	352.5	30	63.5	110	85	ER25-Ø3.175-Ø16	Grease	Water	2X7007C P4 2X7004C P4	16
GDK120-18Z/5.5	18000	5.5	2.92	220 380	19.0 11.0	300	2	365	29	59.5	120	94	ER25-Ø3.175-Ø16	Grease	Water	2X7007C P4 2X7005C P4	21
GDK125-18-24Z/5.5	18000- 24000	5.5	2.92 2.12	220 380	19.0 11.0	300-400	2	365	32.5	56	125	100	ER25-Ø3.175-Ø16	Grease	Water	2X7007C P4 2X7005C P4	25
GDK125-18Z/6.5	18000	6.5	3.45	220 380	22.5 13.0	300	2	372	33.5	62	125	100	ER32-Ø3.175-Ø20	Grease	Water	2X7008C P4 2X7005C P4	25
GDK125-18Z/7.5	18000	7.5	3.98	220 380	28.0 16.0	900	6	395	29	59.5	125	100	ER25-Ø3.175-Ø16	Grease	Water	2X7007 C P4 2X7005C P4	31
GDK125-24Z/7.5	24000	7.5	3.98	220 380	28.0 16.0	800	4	404.5	36.5	44.5	125	92	ER32-Ø3.175-Ø20	Grease	Water	2X7008C P4 2X7006C P4	28
GDK125-15Z/11	15000	11	7.00	220 380	38.0 22.0	750	6	405	35	63.5	125	100	ER32-Ø3.175-Ø20	Grease	Water	2X7009C P4 2X7005C P4	31
GDK150-12Z/11	12000	11	8.75	380	22.0	400	4	426	41	41	150	118	ER32-Ø3.175-Ø20	Grease	Water	2X7009C P4 2X7007C P4	46
GDK150-12Z/11B	12000	11	8.75	380	22.0	400	4	427	42	42	150	118	ER40-Ø3.175-Ø26	Grease	Water	2X70010C P4 2X7007C P4	46

Note: The above electrical spindle motors' input voltage is ±10% of the rated.

## Mechanical Drawings

