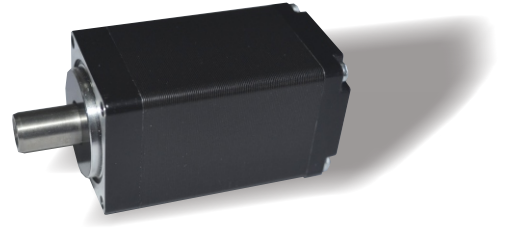


Specifications

Step Angle	1.8°
Step Angle Accuracy	±0.09° (full step, no load)
Backlash	0.5° to 1°
Storage Humidity	20% to 90%
Max. Surface Temperature	100 °C Max.(max. allowed temp.)
Ambient Temperature	-20 °C to +50 °C
Insulation Resistance	500VDC, 100 MΩ Min.
Dielectric Strength	500 VAC, 1min, Class B
Max. Radial Load	60N
Max. Axial Load	320N (20mm from installation point)

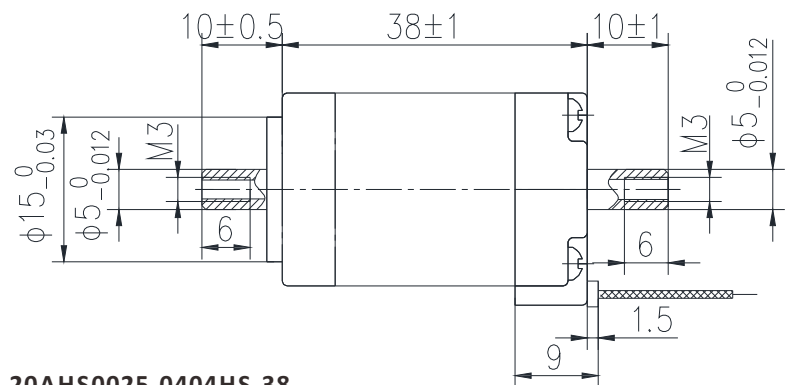
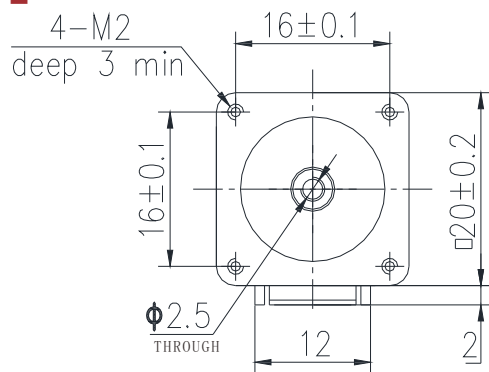


Highlights:

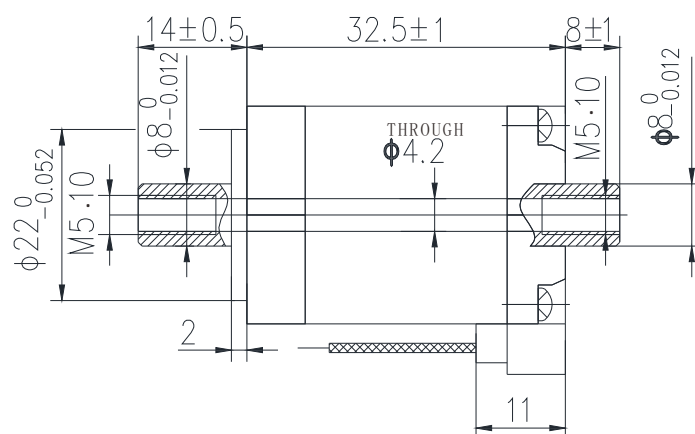
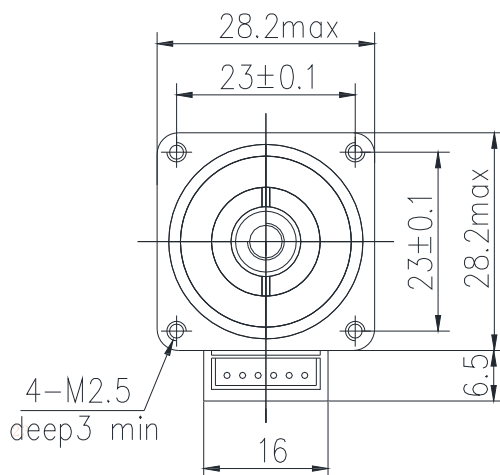
- Japanese Top Manufacturer;
- Low Noise, Low Vibration, High Smoothness;
- High Efficiency, Long lifetime;
- Customization Accepted.

Model	Holding Torque N.cm	Current A/Ø	Resistance Ω/Ø	Inductance mH/Ø	Rotor Inertia g.cm ²	Bi/Unipolar # of Leads	Weight Kg	Length Motor Body mm	Hollow Diameter mm	Screw Type mm
20AHS0025-0404HS-38	2.5	0.4	12	3.7	3	Bi(4)	0.08	38	2.5	M3
28AHS006-0704HS-33	6.0	0.7	4.5	2.7	9	Bi(4)	0.12	32.5	4.2	M5
43AHS038-1304HS-40	38.0	1.3	3.0	6.0	57	Bi(4)	0.28	39.7	4.2	M5
43AHS052-1304HS-48	52.0	1.3	3.2	7.0	82	Bi(4)	0.36	47.7	4.2	M5
59AHS076-3004HS-45	76.0	3.0	0.5	1.2	185	Bi(4)	0.5	44.4	4.2	M5

Mechanical Dimensions in mm



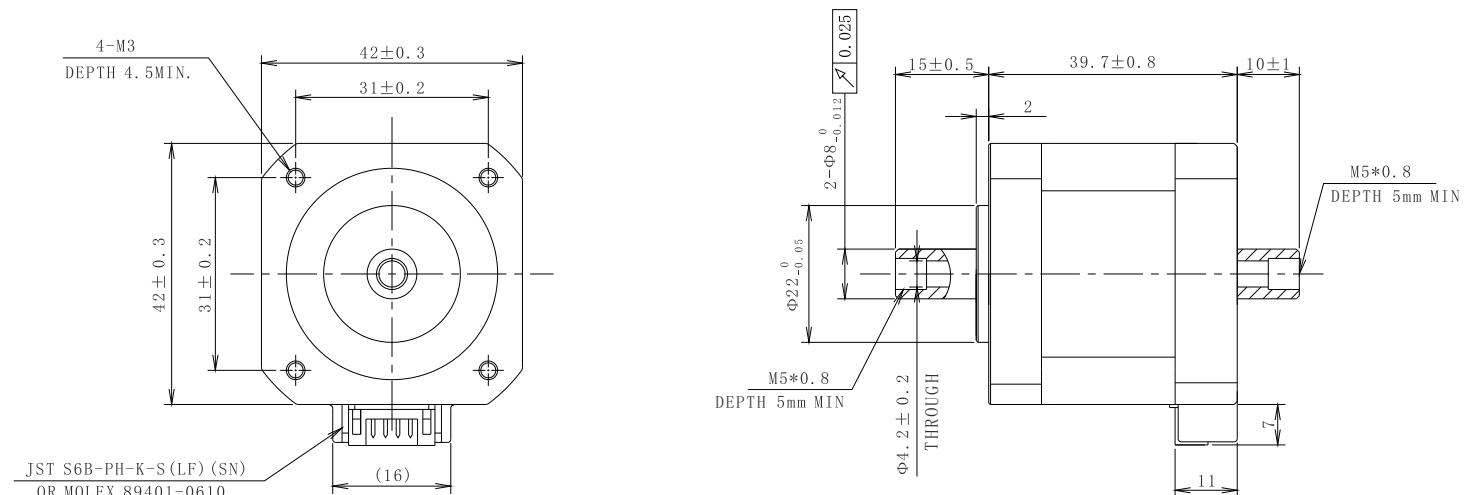
20AHS0025-0404HS-38



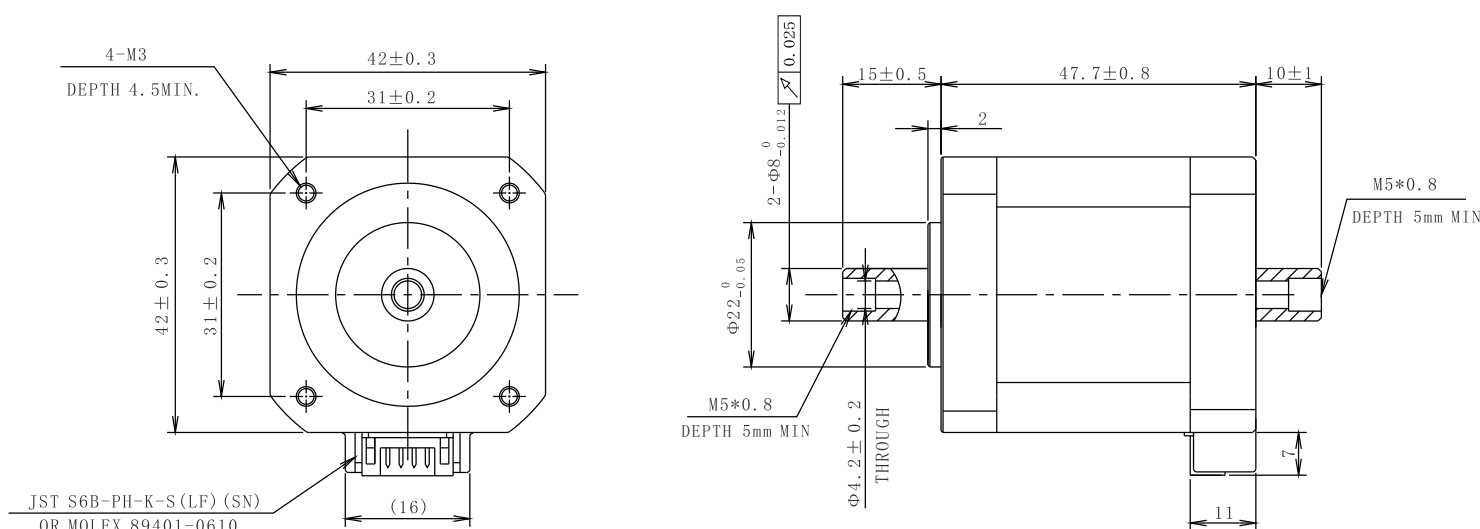
28AHS006-0704HS-33

AHS Series Hollow Shaft Stepper Motors

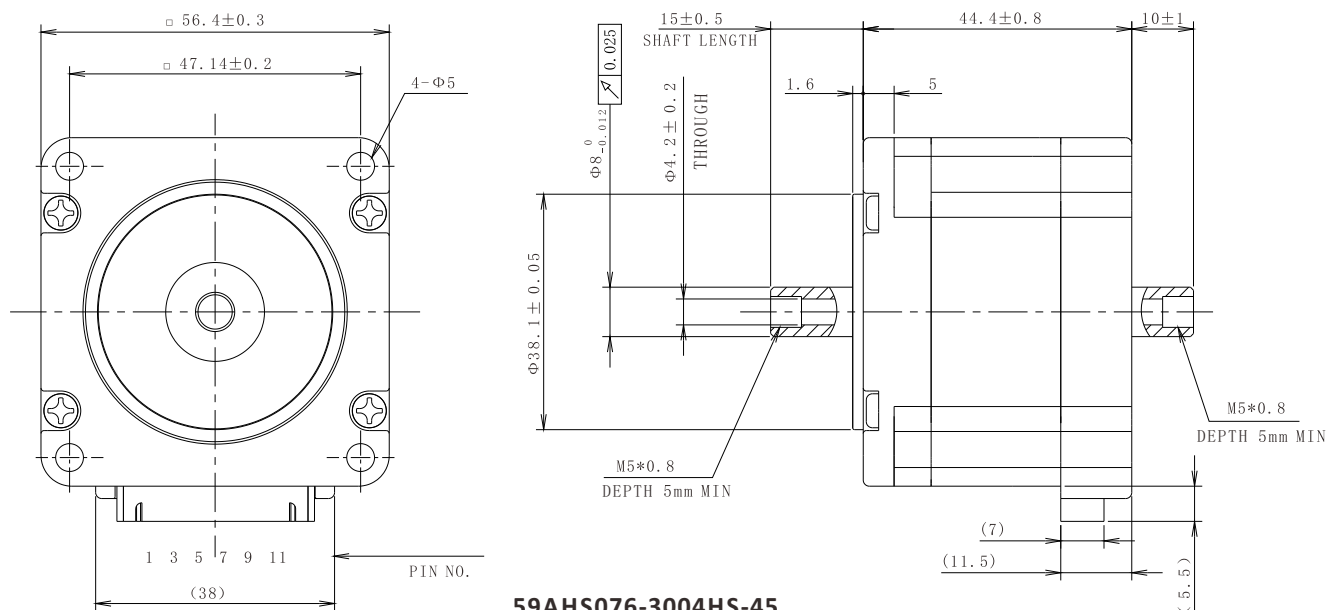
2Phase Hybrid Stepper Motors



43AHS038-1304HS-40

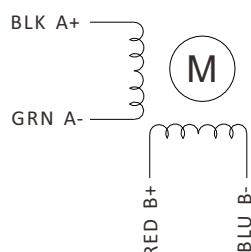


43AHS052-1304HS-48



59AHS076-3004HS-45

Wiring Diagram



Torque Speed Curves

