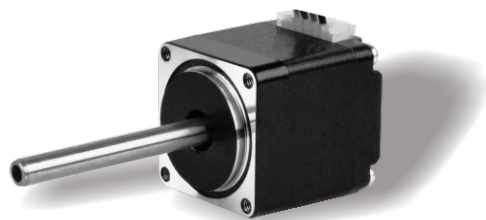


28HS007 Series

Nema 11, 2 Phase Standard Hybrid Stepper Motors

Specifications

Step Angle	1.8° (2 Phase)
Step Angle Accuracy	0.09°
Shaft Type	Single, Dia. 4mm (Customizable)
Max. Temperature Rise	Less than 80 °C (Rated Current)
Max. Surface Temperatures	Max Allowed 100°C
Ambient Temperature	-20 °C ~ +50 °C
Insulation Grade	100 MΩ Min. , Class B
Dielectric Strengt	500 VAC for 1 Minute
Max. Axial Load	5N
Max. Radial Load	25N (10mm from mounting Surface)
Certificates	Rohs, CE, CCC (As per Customer Need)

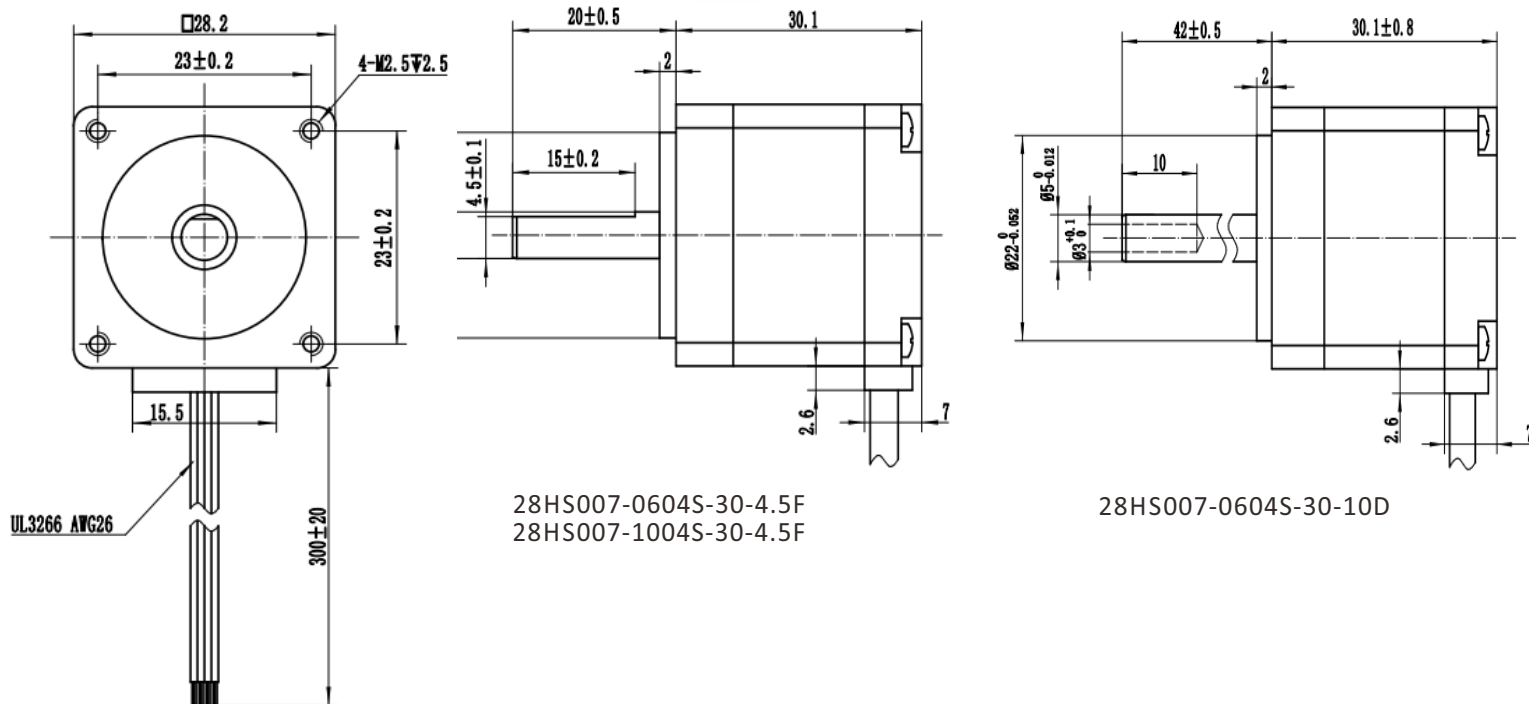


Highlights:

- Small Size with High Torque;
- Low Noise, Low Vibration;
- High Speed, High Smoothness;
- High Efficiency, Long lifetime ;
- Flexible in **Customization**:
Shaft Type(diameters, dual shaft, hollow shaft, flat, key),
Torque Values, Lead Type etc.

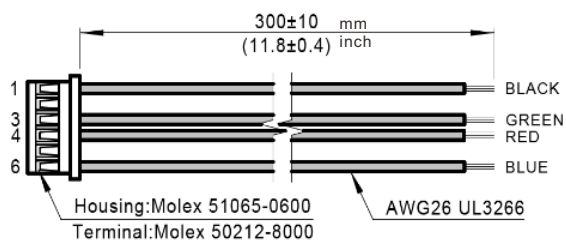
Model	Current	Resistance	Inductance	Holding Torque	Detent Torque	Rotor Inertia	Coil Type Bi/Unipolar	Weight	Length
	A/Ø	Ω/Ø	mH/Ø	N.cm	N.cm	g.cm ²	# of Leads	g	mm
28HS007-0604S-30-4.5P	0.6	6.7	5.0	7.0	0.5	9	Bi (4)	100	30.1
28HS007-0604S-30-10D	0.6	6.7	5.0	7.0	0.5	9	Bi (4)	100	30.1
28HS007-1004S-30-4.5P	1.0	2.4	1.8	7.0	0.5	9	Bi (4)	100	30.1

Mechanical Dimensions (in mm)

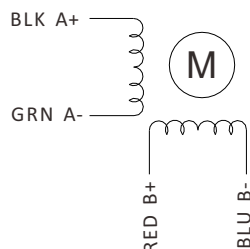


Matching Connector with Leads Dimensions

4 Lead Part Number 4634 1402 04190

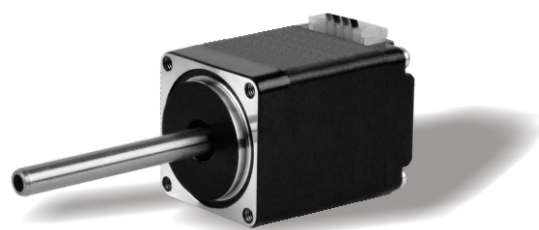


■ Wiring Diagram



Specifications

Step Angle	1.8° (2 Phase)
Step Angle Accuracy	0.09°
Shaft Type	Single, Dia. 4mm (Customizable)
Max. Temperature Rise	Less than 80 °C (Rated Current)
Max. Surface Temperatures	Max Allowed 100°C
Ambient Temperature	-20 °C ~ +50 °C
Insulation Grade	100 MΩ Min. , Class B
Dielectric Strengt	500 VAC for 1 Minute
Max. Axial Load	5N
Max. Radial Load	25N (10mm from mounting Surface)
Certificates	Rohs, CE, CCC (As per Customer Need)

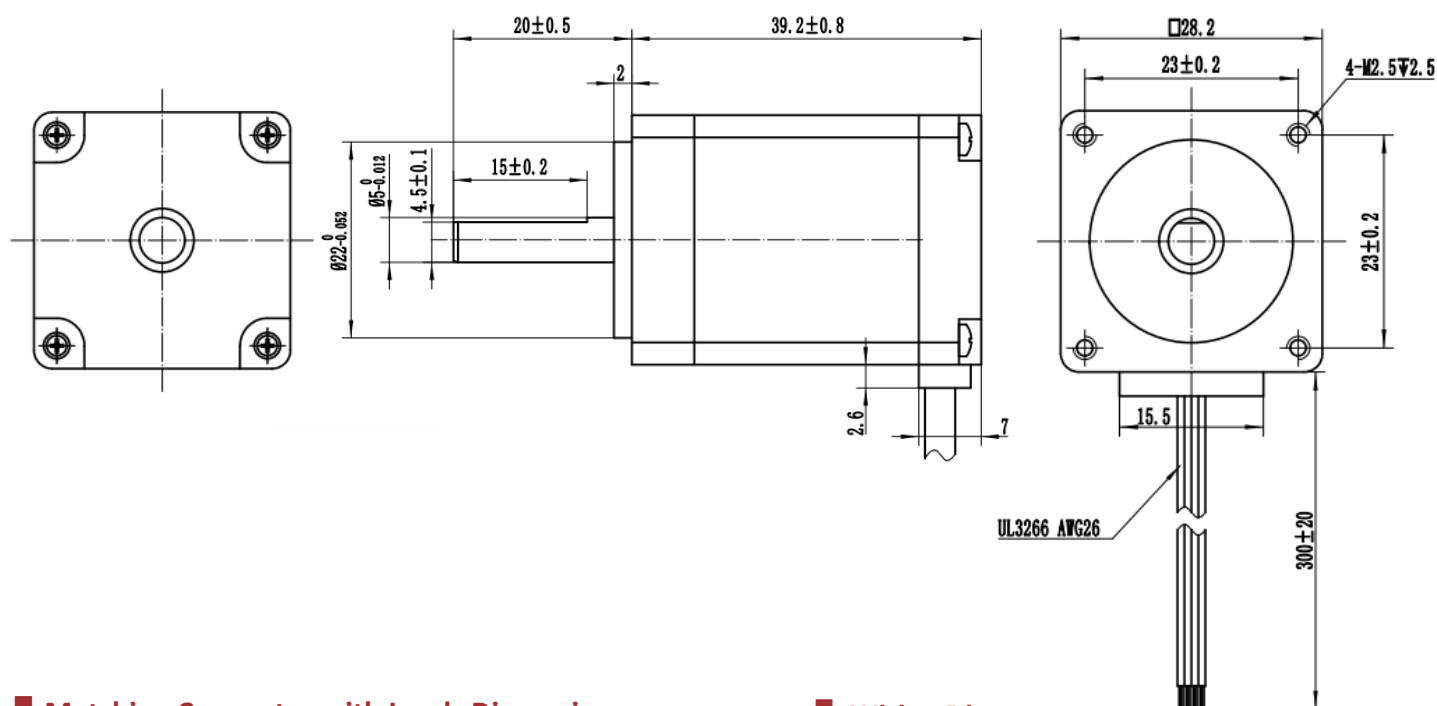


Highlights:

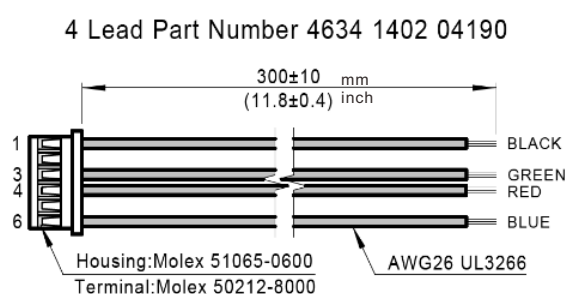
- Small Size with High Torque;
- Low Noise, Low Vibration;
- High Speed, High Smoothness;
- High Efficiency, Long lifetime ;
- Flexible in **Customization**:
Shaft Type(diameters, dual shaft, hollow shaft, flat, key),
Torque Values, Lead Type etc.

Model	Current	Resistance	Inductance	Holding Torque	Detent Torque	Rotor Inertia	Bi/Unipolar	Weight	Length
	A/Ø	Ω/Ø	mH/Ø	N.cm	N.cm	g.cm ²	# of Leads	g	mm
28HS012-0604S-39-4.5F	0.6	9.3	7.5	12.0	0.6	12	Bi (4)	150	39.2
28HS012-1004S-39-4.5F	1.0	3.3	2.7	12.0	0.6	12	Bi (4)	150	39.2

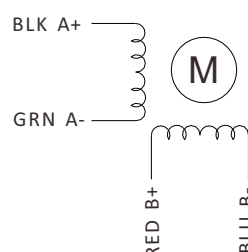
Mechanical Dimensions (in mm)



Matching Connector with Leads Dimensions



Wiring Diagram

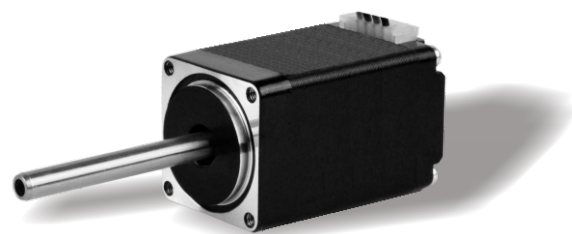


28HS018 Series

Nema 11, 2 Phase Standard Hybrid Stepper Motors

Specifications

Step Angle	1.8° (2 Phase)
Step Angle Accuracy	0.09°
Shaft Type	Single, Dia. 4mm (Customizable)
Max. Temperature Rise	Less than 80 °C (Rated Current)
Max. Surface Temperatures	Max Allowed 100°C
Ambient Temperature	-20 °C ~ +50 °C
Insulation Grade	100 MΩ Min. , Class B
Dielectric Strength	500 VAC for 1 Minute
Max. Axial Load	5N
Max. Radial Load	25N (10mm from mounting Surface)
Certificates	Rohs, CE, CCC (As per Customer Need)

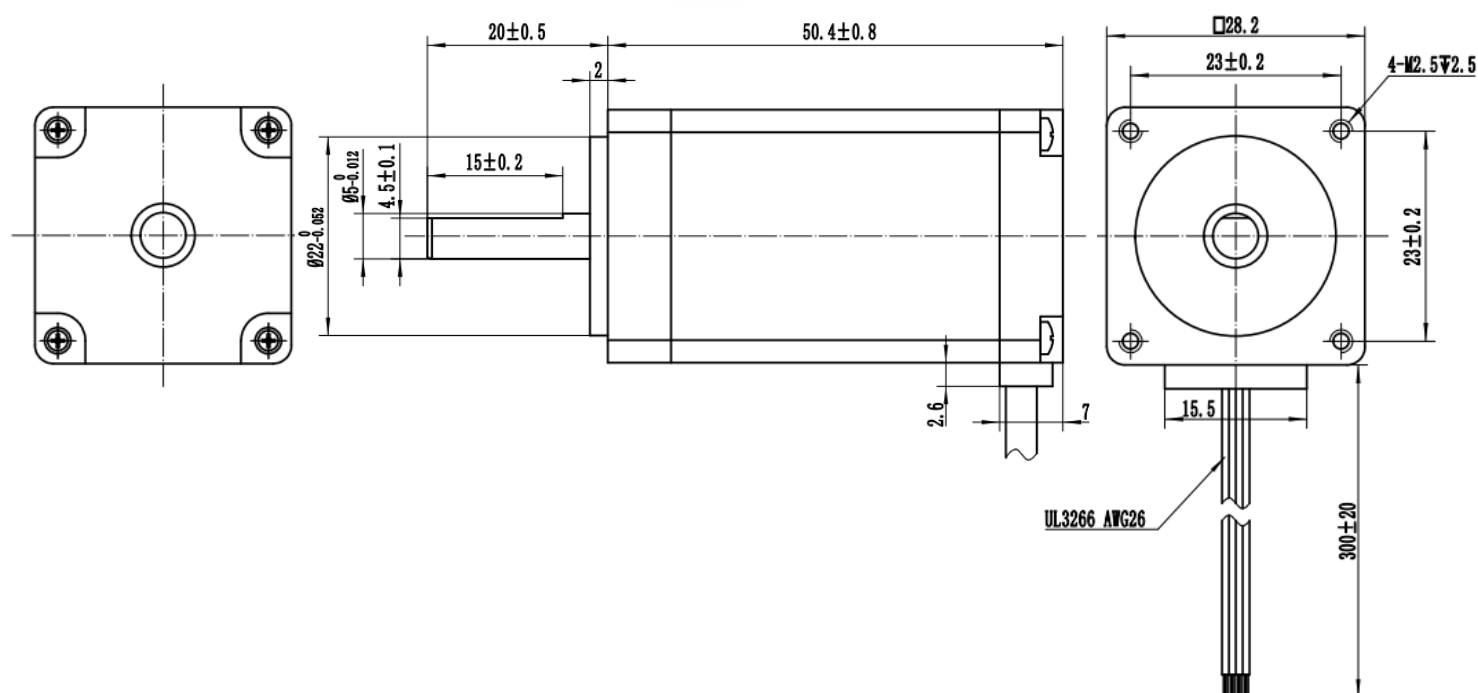


Highlights:

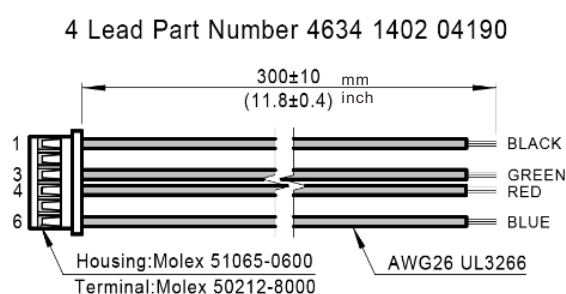
- Small Size with High Torque;
- Low Noise, Low Vibration;
- High Speed, High Smoothness;
- High Efficiency, Long lifetime ;
- Flexible in **Customization**:
Shaft Type(diameters, dual shaft, hollow shaft, flat, key),
Torque Values, Lead Type etc.

Model	Current	Resistance	Inductance	Holding Torque	Detent Torque	Rotor Inertia	Bi/Unipolar	Weight	Length
	A/Ø	Ω/Ø	mH/Ø	N.cm	N.cm	g.cm ²	# of Leads	g	mm
28HS018-1004S-50-4.5F	1.0	4.4	4.0	18.0	0.8	18	Bi (4)	200	50.4

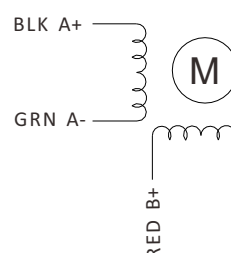
Mechanical Dimensions (in mm)



Matching Connector with Leads Dimensions



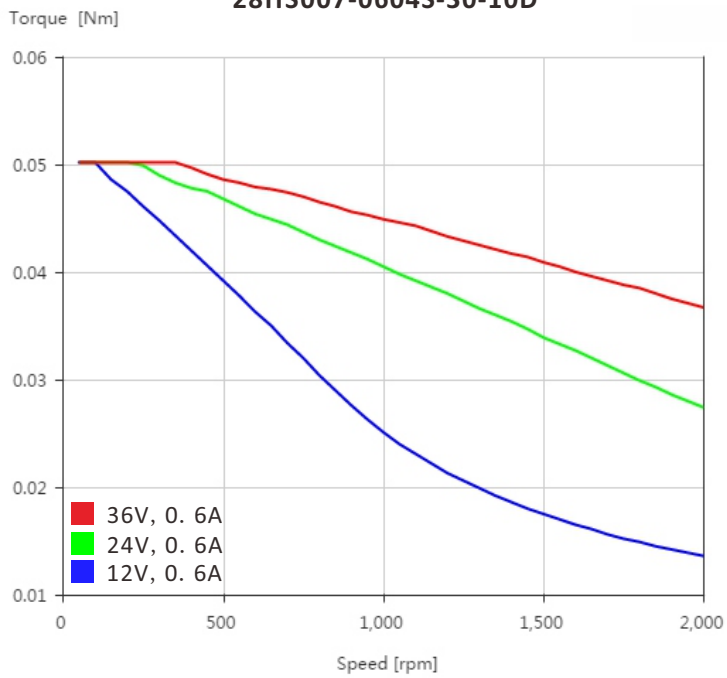
Wiring Diagram



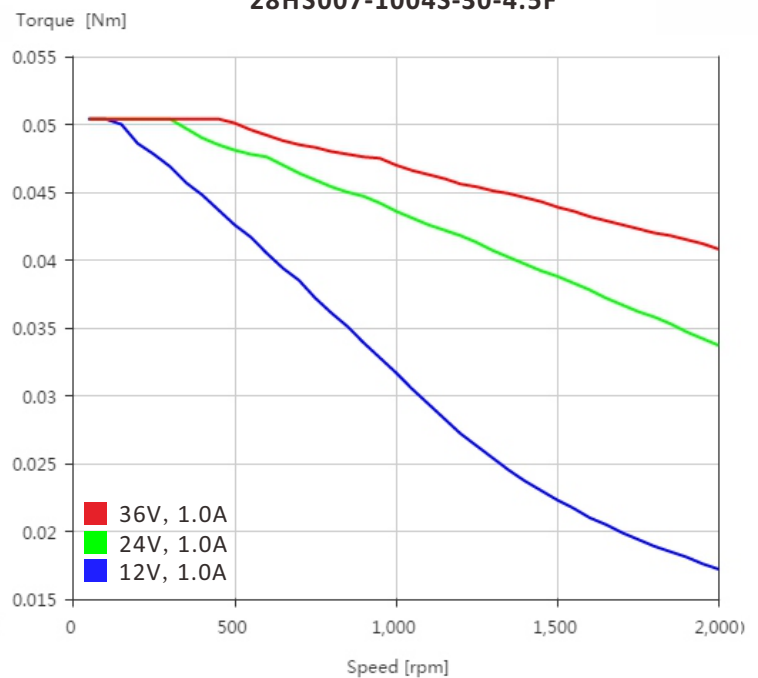
28HSXXX Torque Speed Curves

Nema 11, 2 Phase Standard Hybrid Stepper Motors

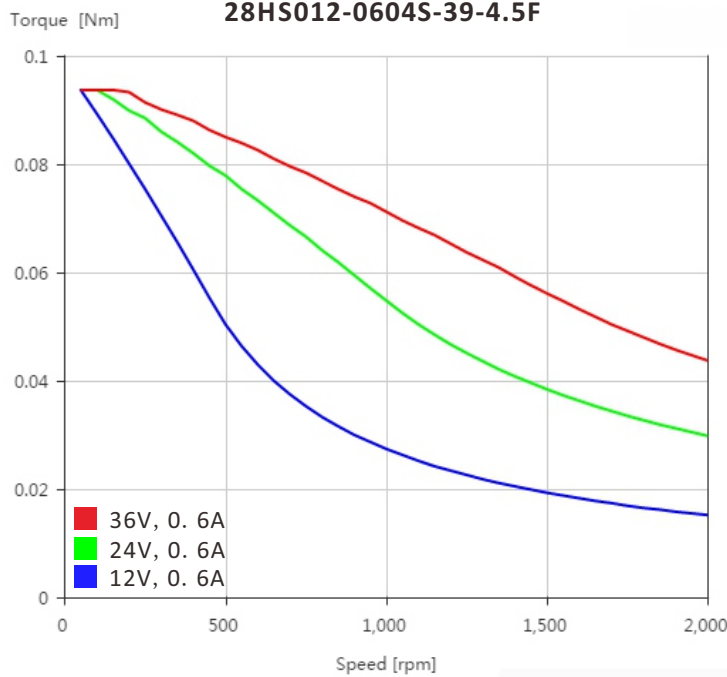
28HS007-0604S-30-4.5F
28HS007-0604S-30-10D



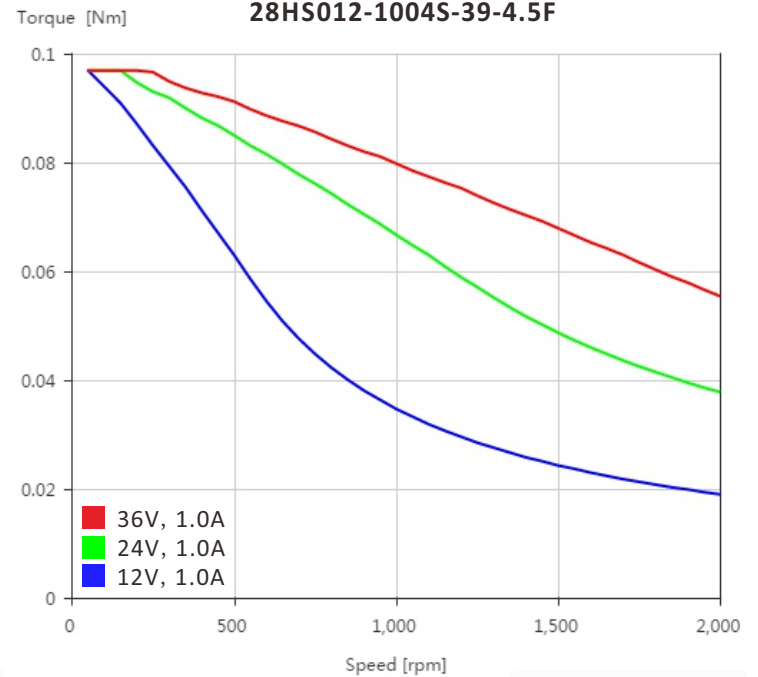
28HS007-1004S-30-4.5F



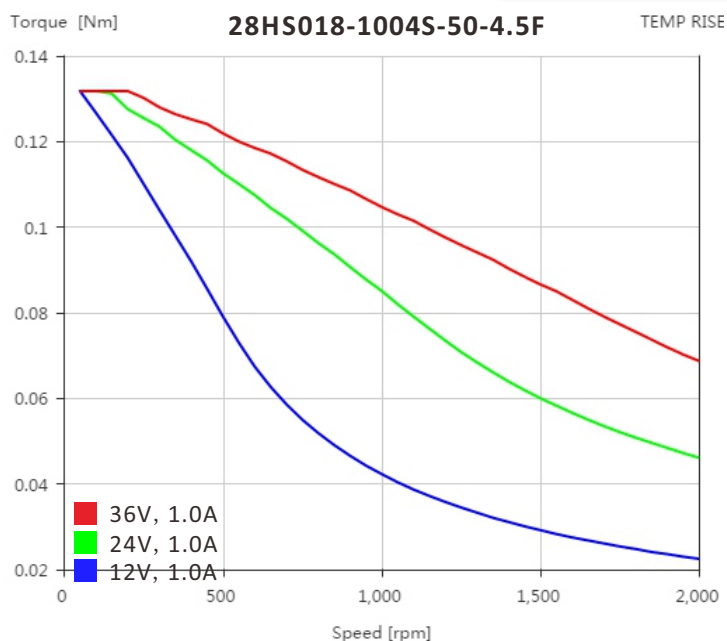
28HS012-0604S-39-4.5F



28HS012-1004S-39-4.5F



28HS018-1004S-50-4.5F



TEMP RISE