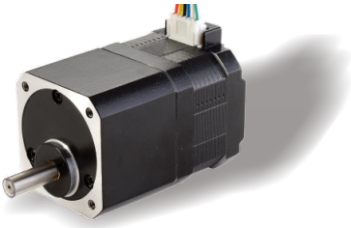


42AHS Series Motors with Gearbox

Nema 17, 2 Phase Hybrid Stepper Motors

Specifications



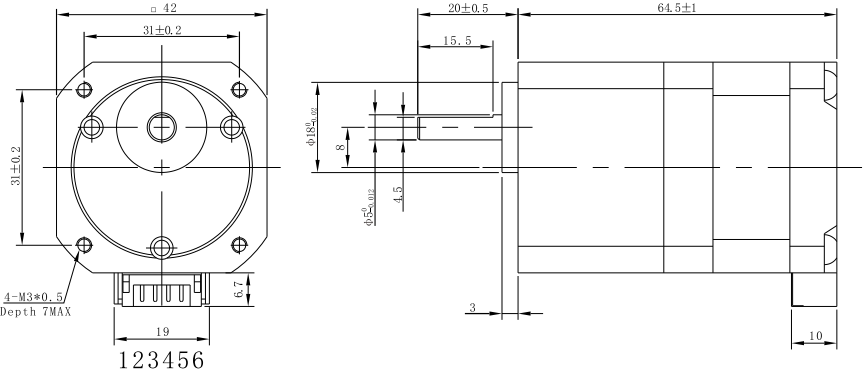
Step Angle	1.8°
Step Angle Accuracy	±0.09° (full step, no load)
Backlash	0.5° to 1°
Storage Humidity	20% to 90%
Max. Surface Temperature	100 °C Max.(max. allowed temp.)
Ambient Temperature	-20 °C ~ +50 °C
Insulation Resistance	500VDC, 100 MΩ Min.
Dielectric Strength	500 VAC, 1min, Class B
Max. Radial Load	10N
Max. Axial Load	25N (15mm from installation point)

Highlights:

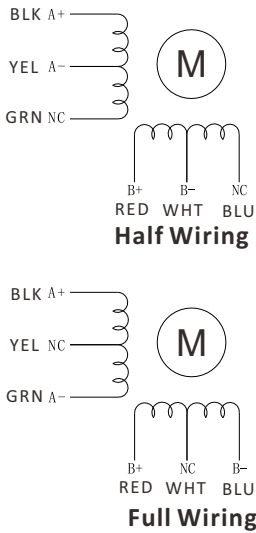
- Japanese Top Manufacturer;
- Low Noise, Low Vibration, High Smoothness;
- Compact design, same size for 1:3.6 to 1:100;
- High Efficiency, Long lifetime ;
- Flexible in **Customization**:
Shaft Type(diameters, dual shaft, hollow shaft, flat, key),
Torque Values, Lead Type etc.

Model	Gear Output Torque N.m	Reduction Ratio	Step Degree Gear Side	Current A/Ø	Resistance Ω/Ø	Inductance mH/Ø	Rotor Inertia g.cm ²	Bi/Unipolar # of Leads	Weight Kg	Length Includ. Gear mm
42AHS020-1006GR3.6-65	0.2	1:3.6	0.5	1.0 Half	2.7	2.3	33	Bi(6)	0.33	64.5
42AHS040-1006GR7.2-65	0.4	1:7.2	0.25	1.0 Half	2.7	2.3	33	Bi(6)	0.33	64.5
42AHS050-1006GR9-65	0.5	1:9	0.2	1.0 Half	2.7	2.3	33	Bi(6)	0.33	64.5
42AHS056-1006GR10-65	0.56	1:10	0.18	1.0 Half	2.7	2.3	33	Bi(6)	0.33	64.5
42AHS080-0706GR18-65	0.8	1:18	0.1	0.7 Full	5.4	9.2	33	Bi(6)	0.33	64.5
42AHS080-0706GR36-65	0.8	1:36	0.05	0.7 Full	5.4	9.2	33	Bi(6)	0.33	64.5
42AHS080-0706GR50-65	0.8	1:50	0.036	0.7 Full	5.4	9.2	33	Bi(6)	0.33	64.5
42AHS080-0706GR100-65	0.8	1:100	0.018	0.7 Full	5.4	9.2	33	Bi(6)	0.33	64.5

Mechanical Dimensions in mm



Wiring Diagrams



42AHS Series Torque Speed Curves

Nema 17, 2 Phase Hybrid Stepper Motors

