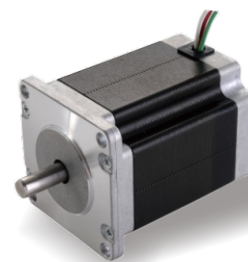


Specifications

Step Angle	1.2° (3 Phase)
Step Angle Accuracy	0.06°
Shaft Type	Single (Customization Accepted)
Max. Temperature Rise	Less than 80 °C (Rated Current)
Max. Surface Temperatures	Max Allowed 100°C
Ambient Temperature	-20 °C ~ +50 °C
Insulation Grade	100 MΩ Min. , Class B
Dielectric Strengt	500 VAC for 1 Minute
Max. Axial Load	15N
Max. Radial Load	90N (15mm from mounting Surface)
Certificates	Rohs, CE, CCC

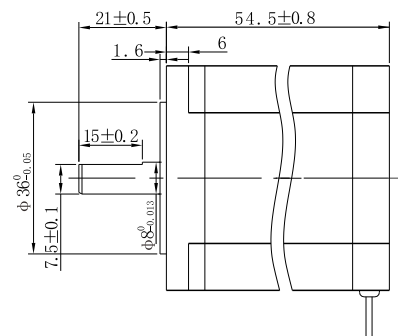
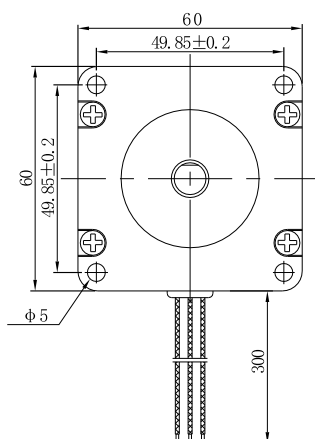


Highlights:

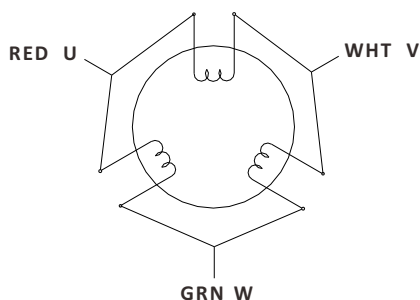
- By Japanese Top Manufacturer;
- High Speed, High Smoothness;
- High Efficiency, Long lifetime ;
- Flexible in **Customization**:
Shaft Type(diameters, dual shaft, hollow shaft, flat, key),
Torque Values, Lead Type etc.

Model	Current A/Ø	Resistance Ω/Ø	Inductance mH/Ø	Holding Torque N.m	Rotor Inertia g.cm ²	Lead # of Leads	Weight kg	Length mm	Matching Drive
360AHS090-5803S-55	5.8	0.32	0.8	0.9	260	3	0.8	54.5	Y3SD3

Mechanical Dimensions (in mm)



Wiring Diagram



Torque Speed Curves

