

Specifications

Step Angle	1.8° (2 Phase)
Step Angle Accuracy	0.09°
Shaft Type	Single, Dia. 4mm (Customizable)
Max. Temperature Rise	Less than 80 °C (Rated Current)
Max. Surface Temperatures	Max Allowed 100 °C
Ambient Temperature	-20 °C ~ +50 °C
Insulation Grade	100 MΩ Min. , Class B
Dielectric Strengt	500 VAC for 1 Minute
Max. Axial Load	3N
Max. Radial Load	15N (5mm from mounting Surface)
Certificates	Rohs, CE, CCC (As per Customer Need)

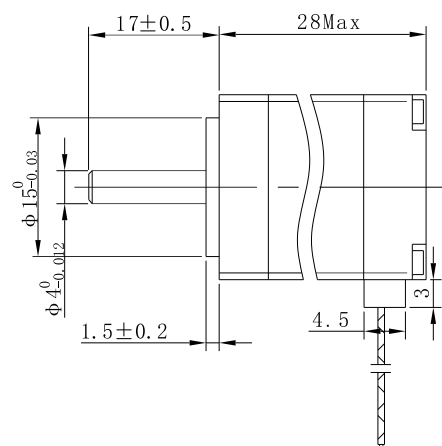
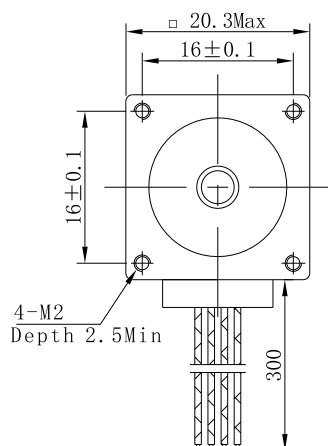


Highlights:

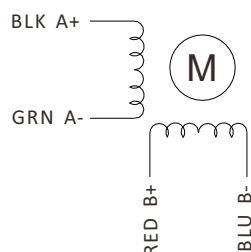
- By Japanese Top Manufacturer;
- High Speed, High Smoothness;
- High Efficiency, Long lifetime ;
- Flexible in **Customization**:
Shaft Type(diameters, dual shaft, hollow shaft, flat, key),
Torque Values, Lead Type etc.

Model	Current A/Ø	Resistance Ω/Ø	Inductance mH/Ø	Holding Torque N.cm	Rotor Inertia g.cm ²	Lead # of Leads	Weight kg	Length mm	Matching Drive
20AHS0018-0604S-28	0.6	7.0	1.9	1.8	2	4	0.05	28	Y2SD1R5

Mechanical Dimensions (in mm)



Wiring Diagram



Torque Speed Curves

