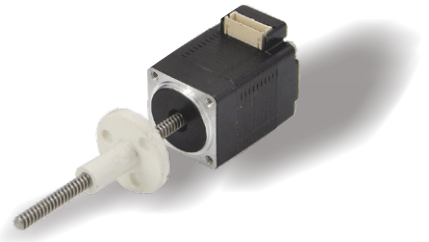


2Phase Nema 8, No-captive, External Nut and Rich Leadscrews

Specifications

Step Angle	1.8° (2 Phase)
Step Angle Accuracy	±0.09°
Size	Nema 8
Insulation Grade	500VDC, 20 MΩ Min. , Class B
Dielectric Strengt	500 VAC for 1 Minute
Temperature Rise	Less than 80°C (Rated Current)
Suface Temperature	Max. Allowed 100°C
Humidity Range	20% to 90% RH
IP Grade	IP40
Nut Material	POM
Certificates	Rohs, CE, CCC



Highlights:

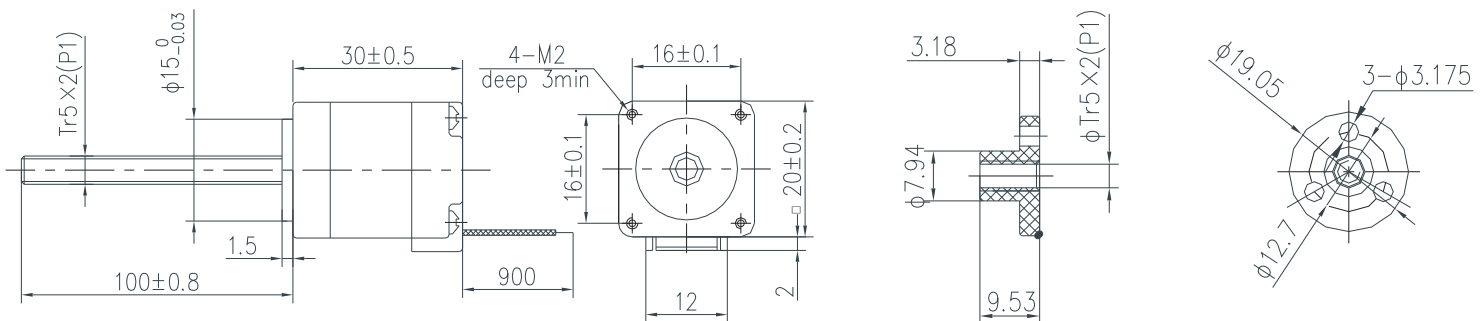
- Low Noise, Low Vibration, Low Heating;
- High Smoothness;
- High Efficiency, Long lifetime ;
- Flexible in Customization:

Screw Diameter, Screw Lead, Screw Length, Motor Length, Electric Parameters, Motor Surface Processing etc.

Model	Current	Resistance	Inductance	Min Thrust	Rotor Inertia	Bi/Unipolar	Screw Lead	Screw Length	Weight	Motor Length	Driver
	A/Ø	Ω/Ø	mH/Ø	N @10RPS	g.cm2	# of Wires	mm	mm	kg	mm	
20LHS0604E-100	0.6	6.5	1.7	5	2	Bi (4)	2	100	0. 06	30	Y2SD1

Note: Customization of motor and leadscrew specifications available.

Mechanical Dimensions (in mm)



Wiring Diagram

