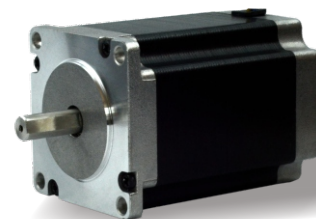


### Specifications

Step Angle	1.2° (3 Phase)
Shaft	Single (Dimension Customizable)
Resistance Accuracy	±10% (20°C Typ.)
Inductance Accuracy	±20% (20°C Typ.)
Temperature Rise	80 °C Max.(rated current)
Ambient Temperature	-20 °C ~ +50 °C
Insulation Grade	100 MΩ Min. , Class B
Dielectric Strengt	500 VAC for 1 Minute
Power Cable Connect	Lead
IP Grade	IP40
Certificates	Rohs, CE, CCC

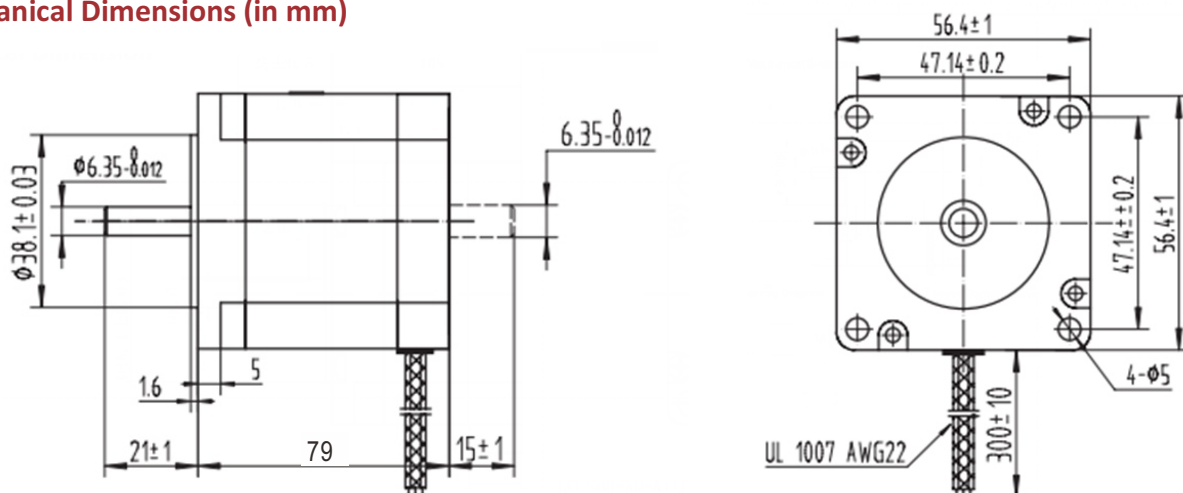


### Highlights:

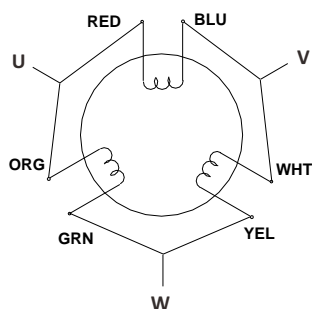
- Low Noise, Low Vibration;
- High Speed, High Smoothness;
- High Efficiency, Long lifetime ;
- Flexible in **Customization**:  
Shaft Type(diameters, dual shaft, hollow shaft, flat, key),  
Torque Values, Lead Type etc.

Model	Current	Resistance	Inductance	Holding Torque	Detent Torque	Rotor Inertia	Bi/Unipolar	Weight	Length
	A/Ø	Ω/Ø	mH/Ø	N.m	N.cm	g.cm <sup>2</sup>	# of Leads	kg	mm
357HS150-5806S-70	5.8	1.05	1.3	1.5	0.68	480	Bi (6)	1.1	79

### Mechanical Dimensions (in mm)



### Wiring Diagram



### Torque Speed Curve

