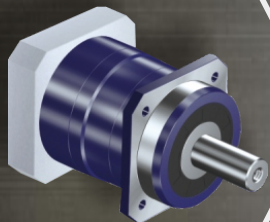


# Content of Helical Gear Precision Planetary Gear Reducers



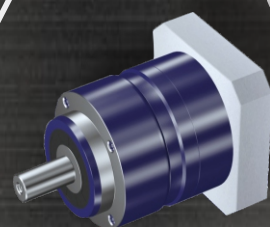
## AF Series

Frame Size(mm)	: 60, 90, 110, 145, 180;
Reduction Ratios	: 3 to 10 (1 Stage), 15 to 100 (2 Stage);
Backlash	: 3 arcmin, 5 arcmin, 7 arcmin;
Input & Output Shaft Type	: All Main Stream, Customizable;
Average Lifetime	: >20000 Hours

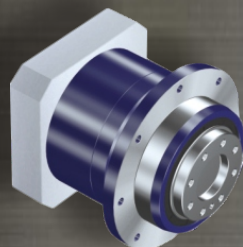
PAGE  
01-22

## AL Series

Frame Size(mm)	: 70, 90, 120, 155, 205;
Reduction Ratios	: 3 to 10 (1 Stage), 15 to 100 (2 Stage);
Backlash	: 5 arcmin, 7 arcmin;
Input & Output Shaft Type	: All Main Stream, Customizable;
Average Lifetime	: >20000 Hours



PAGE  
23-44



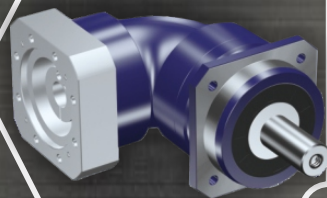
## AH Series

Frame Size(mm)	: 64, 90, 110;
Reduction Ratios	: 4 to 10 (1 Stage), 16 to 100 (2 Stage);
Backlash	: 3 arcmin, 5 arcmin;
Input & Output Shaft Type	: All Main Stream, Customizable;
Average Lifetime	: >20000 Hours

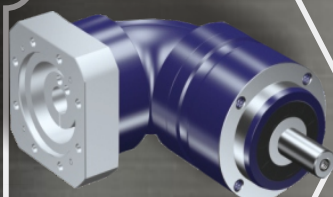
PAGE  
45-58

## ZAF Series

Frame Size(mm)	: 60, 90, 115, 140;
Reduction Ratios	: 3 to 10 (1 Stage), 16 to 100 (2 Stage);
Backlash	: 6 arcmin, 9 arcmin;
Input & Output Shaft Type	: All Main Stream, Customizable;
Average Lifetime	: >20000 Hours



PAGE  
59-76



## ZAL Series

Frame Size(mm)	: 70, 90, 120, 155;
Reduction Ratios	: 3 to 10 (1 Stage), 16 to 100 (2 Stage);
Backlash	: 6 arcmin, 9 arcmin;
Input & Output Shaft Type	: All Main Stream, Customizable;
Average Lifetime	: >20000 Hours

PAGE  
77-94