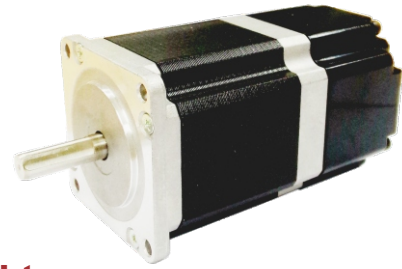


57AHS Series Motors with Brake

Nema 23, 2 Phase Hybrid Stepper Motors



Specifications

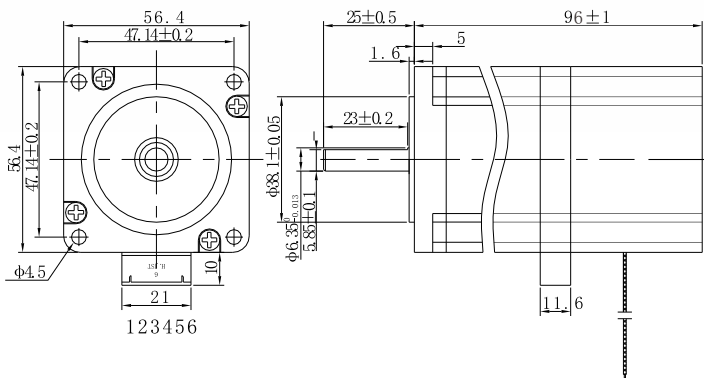
Step Angle	1.8°
Step Angle Accuracy	±0.09° (full step, no load)
Brake Power	4W
Brake Reaction Time	50ms
Max. Surface Temperature	100 °C Max. (max. allowed temp.)
Ambient Temperature	-20 °C ~ +50 °C
Insulation Resistance	500VDC, 100 MΩ Min.
Dielectric Strength	500 VAC, 1min, Class B
Max. Radial Load	15N
Max. Axial Load	90N (15mm from installation point)

Highlights:

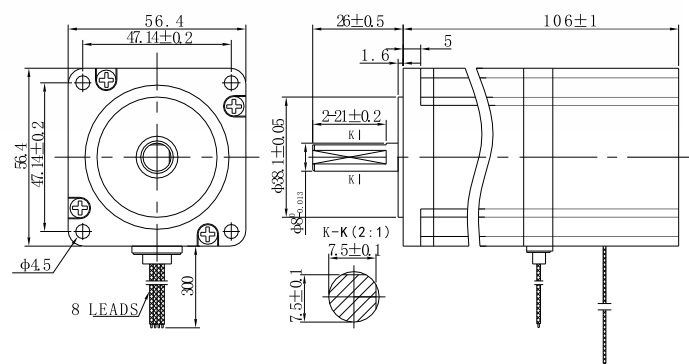
- Japanese Top Manufacturer;
- Low Noise, Low Vibration;
- High Speed, High Smoothness;
- High Efficiency, Long lifetime ;
- Flexible in **Customization**:
Shaft Type(diameters, dual shaft, hollow shaft, flat, key),
Torque Values, Lead Type etc.

Model	Holding Torque N.m	Current A/Ø	Resistance Ω/Ø	Inductance mH/Ø	Rotor Inertia g.cm ²	Bi/Unipolar # of Leads	Brake Torque N.m	Brake Voltage DC V	Weight Kg	Length Include Brake mm
57AHS140-4204BR-96	1.4	4.2	0.4	1.3	245	Bi(4)	1.5	24	1.15	96
57AHS140-4408BR-106	1.4	4.4	0.4	1.3	330	Bi(8)	1.5	24	1.3	106
57AHS140-2208BR-106	1.4	2.2	1.4	5.2	330	Bi(8)	1.5	24	1.3	106
57AHS240-4204BR-119	2.4	4.2	2.4	2.2	470	Bi(4)	1.5	24	1.55	119

Mechanical Dimensions in mm

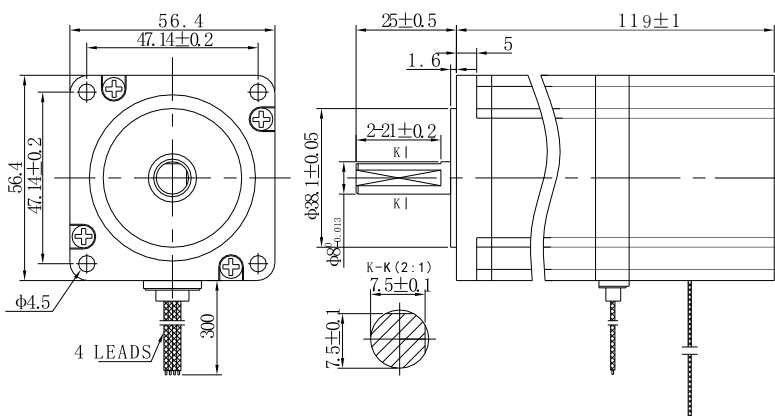


57AHS140-4204BR-96



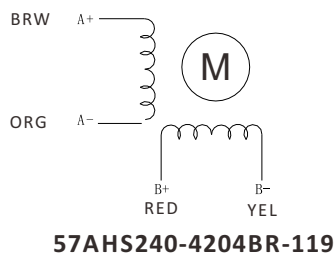
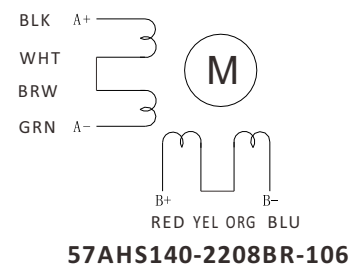
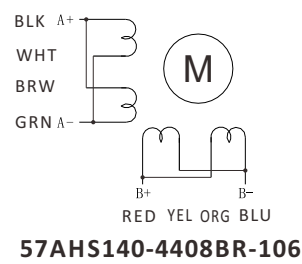
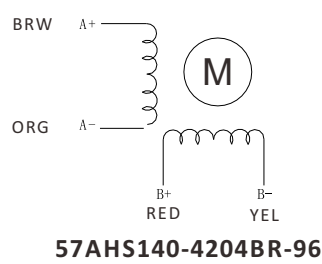
57AHS140-4408BR-106

57AHS140-2208BR-106



57AHS240-204BR-119

Wiring Diagram



Note: Brake wiring as, Red for 24+ and Black for GND.

Torque Speed Curves

